



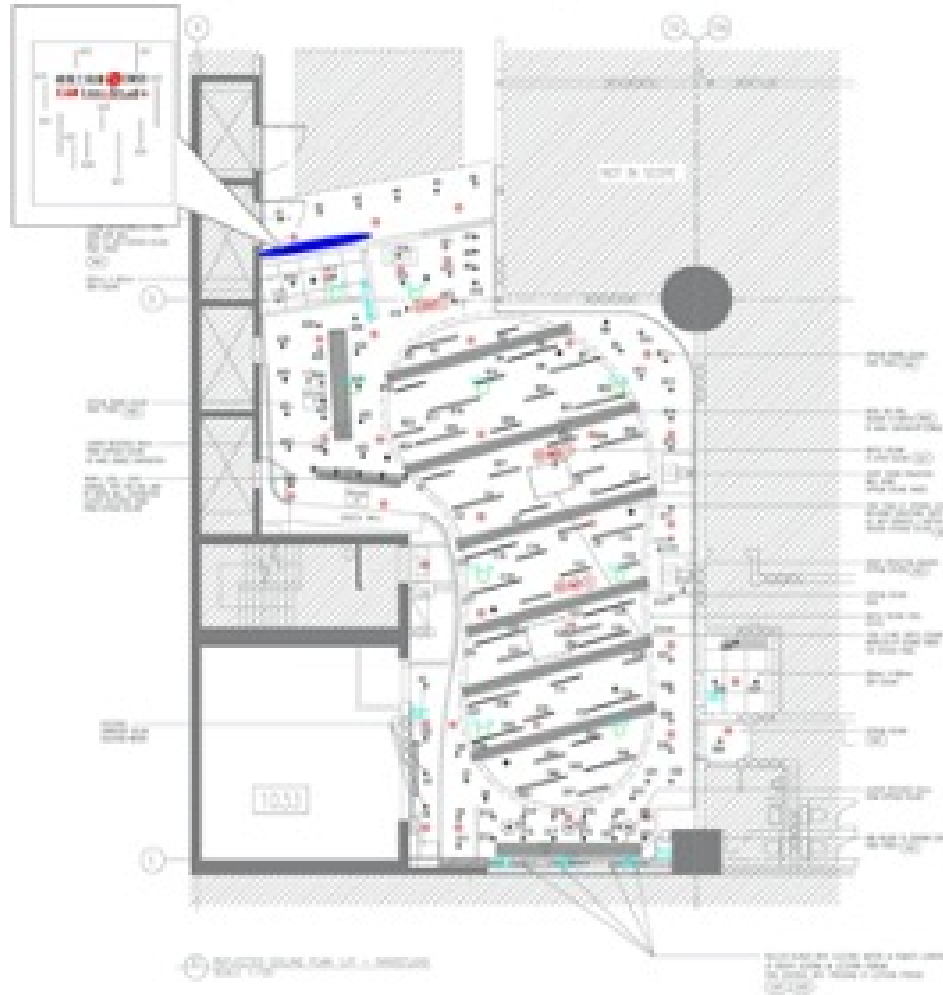
HKSAR Electrical & Mechanical Department

InnoStudio  
1/F EMSD HQ Building

# EMSD Inno Studio

## Summary of project

### Site Layout and lighting point requirement



64 x 18W LED Linear Lights 23 x  
12W LED Linear Lights 87 x 10W  
LED Down Lights

3 x 30W LED Pendant Light

3 x Occupancy Sensors

1 x Sun-Light Sensor

3 x CO<sub>2</sub> Sensors

3 x Temp. & Humid. Sensors

Fully automatic operation  
(occupancy/vacancy policy) with  
light switches / QR- Code control  
for special & task lighting

Interfacing with Crestron AV  
system

# EMSD Inno Studio

## Summary of project



Energy Saving: 30%

Light Power Density: 6.05W/M<sup>2</sup> Power

Factor: better than 0.94 THI: 5-18% (full dimming range)

Flicker: better than 0.4839%

Scene Setting: 32 scene for combination